

MONTHLY MEMBERSHIP PROGRESS REPORT

LOCATION INDIA

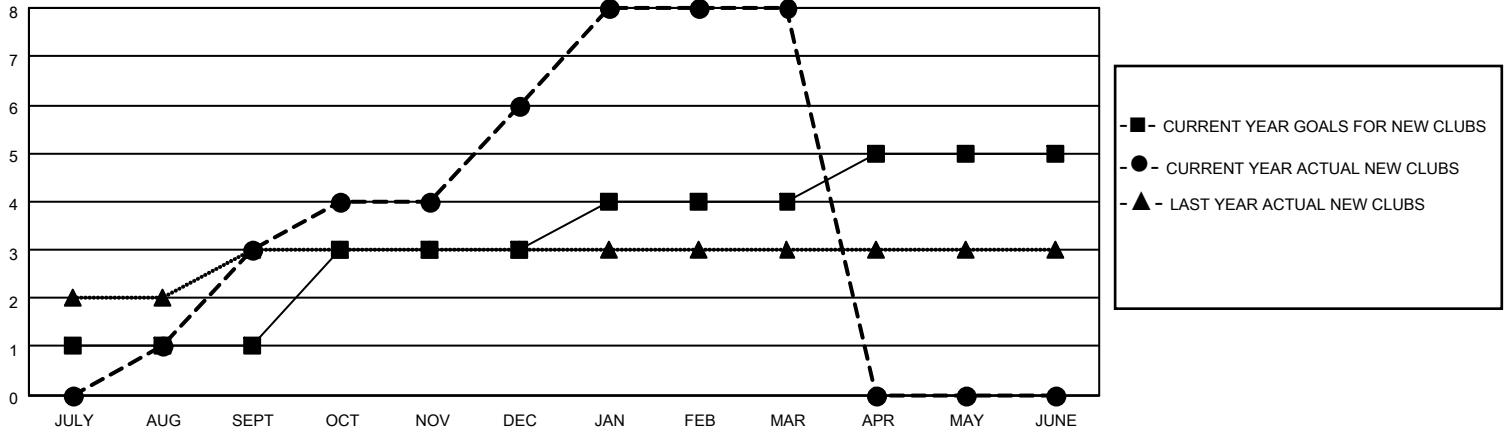
District 318 C

Results as of: 3/31/2021

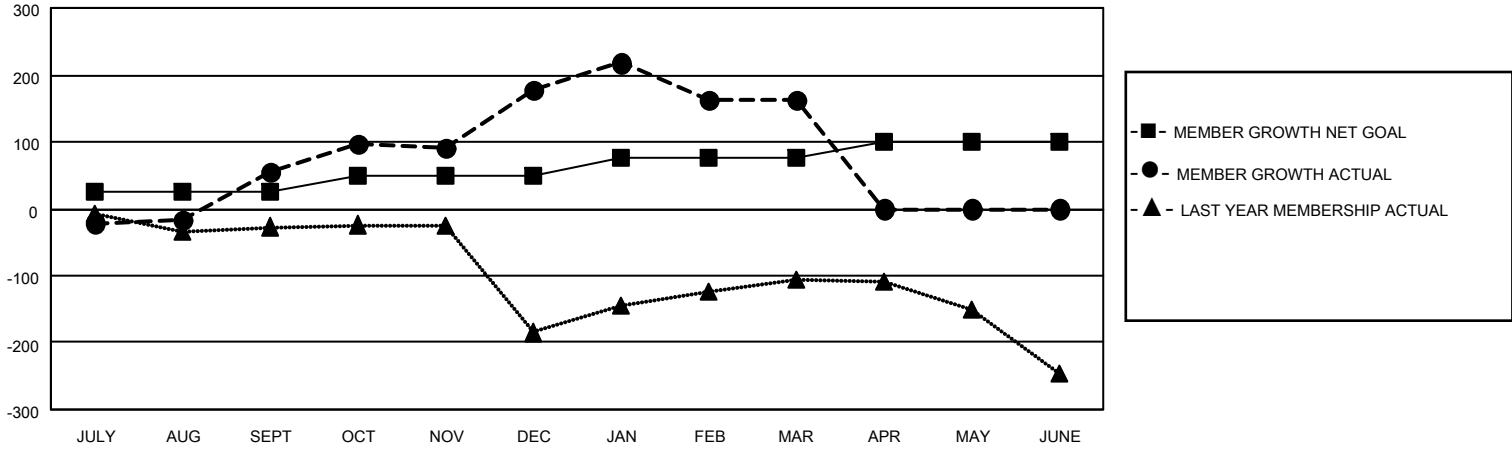
Clubs			
RESULTS FOR 2020-2021			
QUARTER	NEW CLUB GOAL	NEW CLUBS	DROPPED CLUBS
JULY/AUG/SEPT	1	3	0
OCT/NOV/DEC	2	3	0
JAN/FEB/MAR	1	2	3
APR/MAY/JUNE	1	0	0

Members			
RESULTS FOR 2020-2021			
QUARTER	MEMBER GROWTH NET GOAL	MEMBER GROWTH ACTUAL	DROPPED MEMBERS ACTUAL (including transfers)
JULY/AUG/SEPT	25	150	79
OCT/NOV/DEC	25	198	67
JAN/FEB/MAR	25	64	78
APR/MAY/JUNE	25	0	0

GOALS AND ACTUAL NEW CLUBS CUMULATIVE



GOALS AND ACTUAL MEMBERS CUMULATIVE



DROPPED CLUBS: 3

55 CLUBS OF 127 ADDED 1 OR MORE NEW MEMBERS

<u>GENDER DISTRIBUTION</u>	
MALE	3,731 (87.17%)
FEMALE	549 (12.83%)

<u>DROPPED MEMBERS</u>	
DECEASED	11
CLUB CANCELLED	56
OTHER	157
TOTAL	224

[CLICK HERE FOR CUMULATIVE MEMBERSHIP DATA](#)

TOTAL FAMILY UNIT MEMBERS	1,039
FAMILY MEMBERS PAYING HALF DUES	551